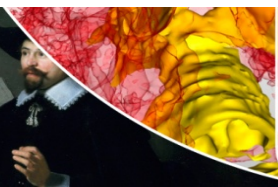
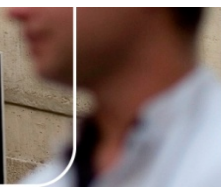
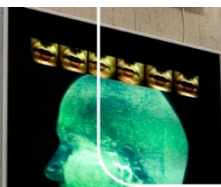


Welcome

Dr Angela de Boer
Coronel Institute of Occupational Health
Amsterdam Public Health research institute
Academic Medical Center
University of Amsterdam
Chair EU Cancer and Work Network CANWON
5-10-2017

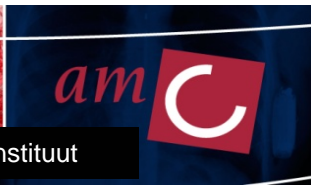
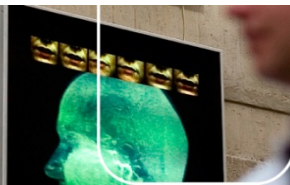
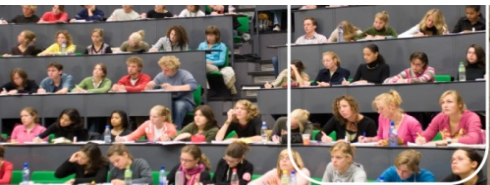


Coronel Institute



Academic Medical Center, Amsterdam

- 6800 Colleagues
- 2200 Students
- 1000 Beds



Coronel institute of occupational health



- 70 Colleagues
- Effects disease on work
- Effects work on disease



Objectives of this project

To provide insight into the problems encountered by workers affected by cancer and their employers

To provide recommendations for companies for workplace interventions to support work rehabilitation after a diagnosis of cancer

To provide insight into barriers and facilitators of implementing interventions to support work rehabilitation after a diagnosis of cancer



Thank you for coming

