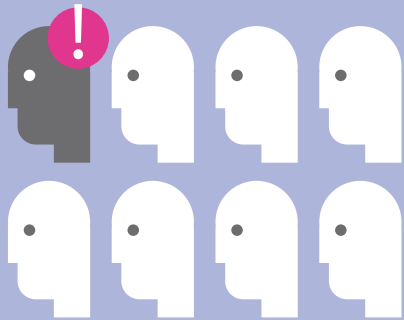
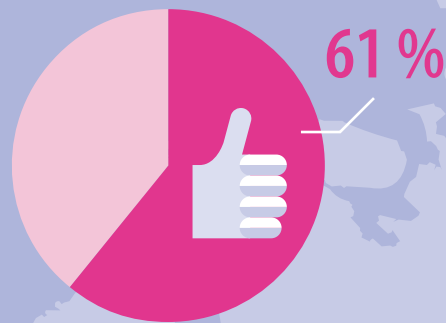


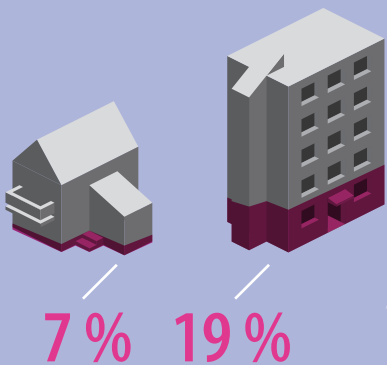
Active Ageing in Europe



One in eight workers (12 %) are aware of policies and programmes making it easier for older workers to continue working up to or beyond retirement age.



Among those who are not aware of such programmes and policies, 61 % support their introduction.



Awareness of policies increases as workplace size increases from 7 % in the smallest workplaces (1-10 workers) up to 19 % in the largest workplaces (more than 250 workers).

