



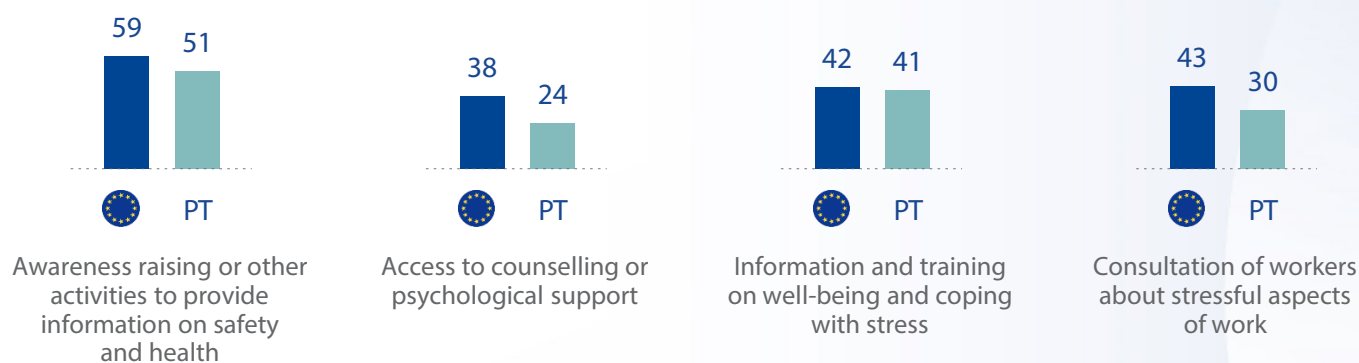
Portugal

Interviews with workers: EU27 - (25 683 interviews) | Portugal - (1 020 interviews)

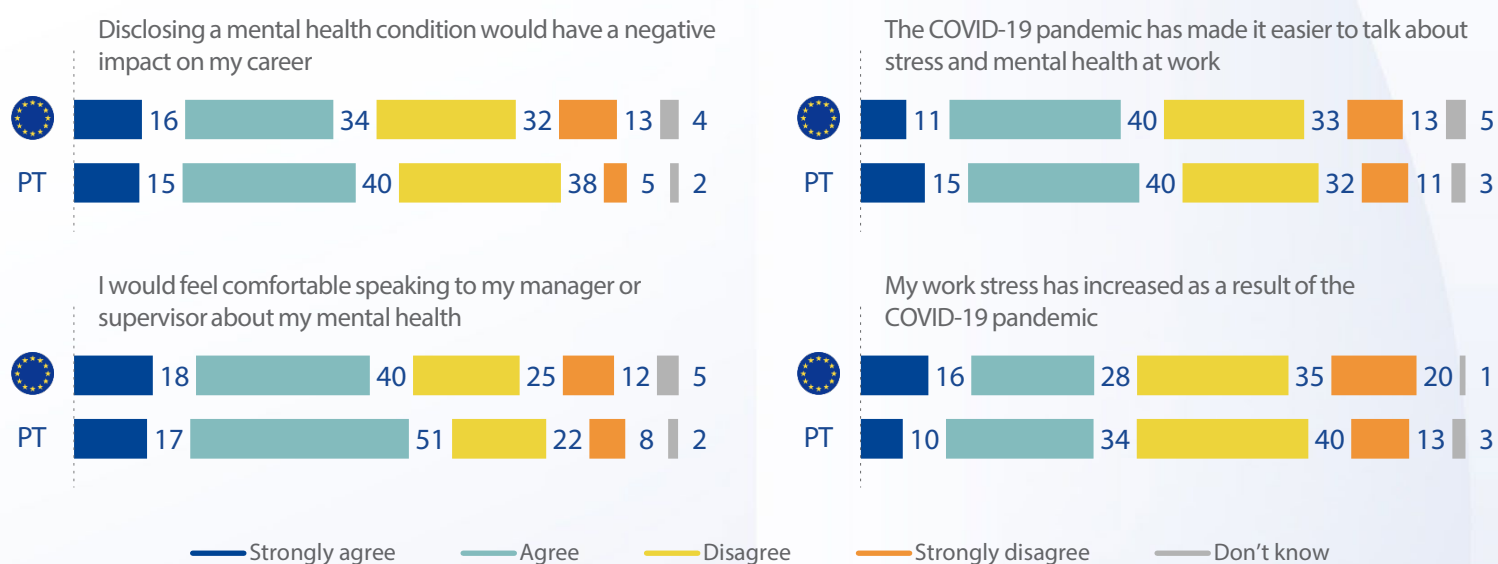
Fieldwork dates: 25.04 - 23.05.2022 | Methodology

Stress and mental health at work

e1 Are any of the following initiatives available in your workplace? (% 'Yes')



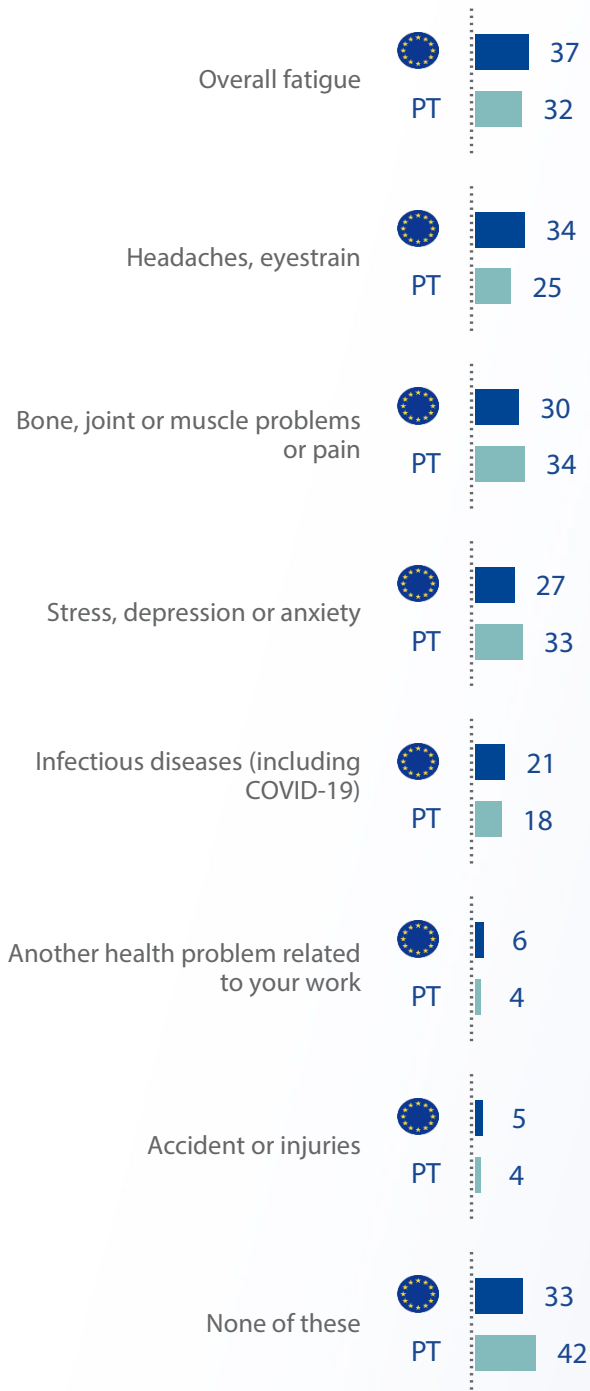
e2 Do you agree or disagree with the following statements on stress and mental health in your workplace? (%)



Work-related health problems

c2

In the last 12 months, have you experienced any of the following health problems caused or made worse by your work? (Multiple answers possible, %)



Managing safety and health at work

f1

Do you think the safety rules at your place of work are a good thing to have or do they make your job more difficult to do? (%)



f2

Do you agree or disagree with the following statements? (% Total 'Agree')

