



Finland

Interviews with workers: EU27 - (25 688 interviews) | Finland - (1 010 interviews)

Fieldwork dates: 31.03 – 14.04.2025 | Methodology

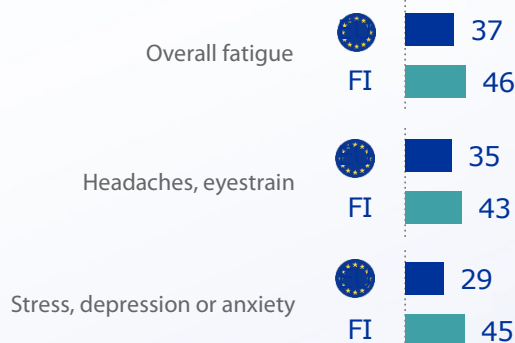
## Psychosocial risks at work

**B1** Would you say that at work you are exposed to the following factors? (% 'Yes')



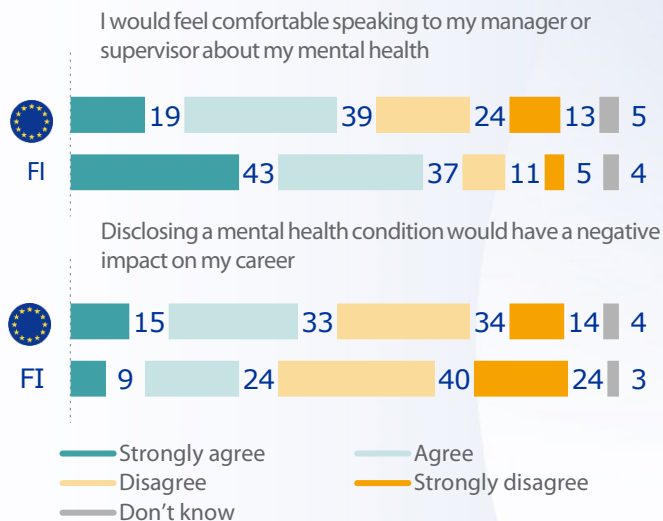
## Work-related health problems

**C1** In the last 12 months, have you experienced any of the following health problems caused or made worse by your work? [MULTIPLE ANSWERS] (% EU Top 3)



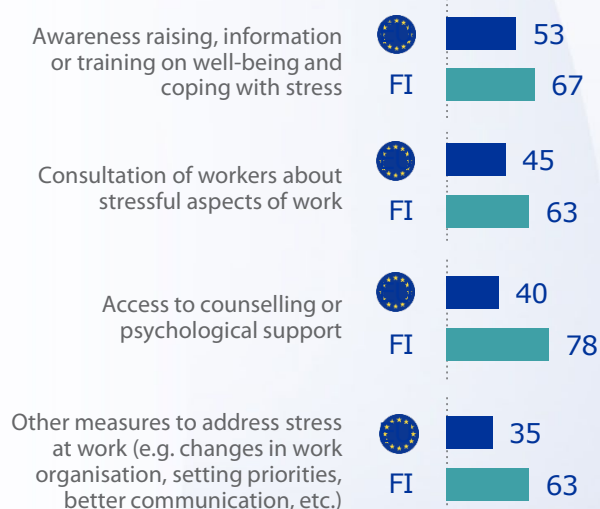
## Talking about mental health

**E2** Do you agree or disagree with the following statements on stress and mental health in your workplace? (% 'Total agree')



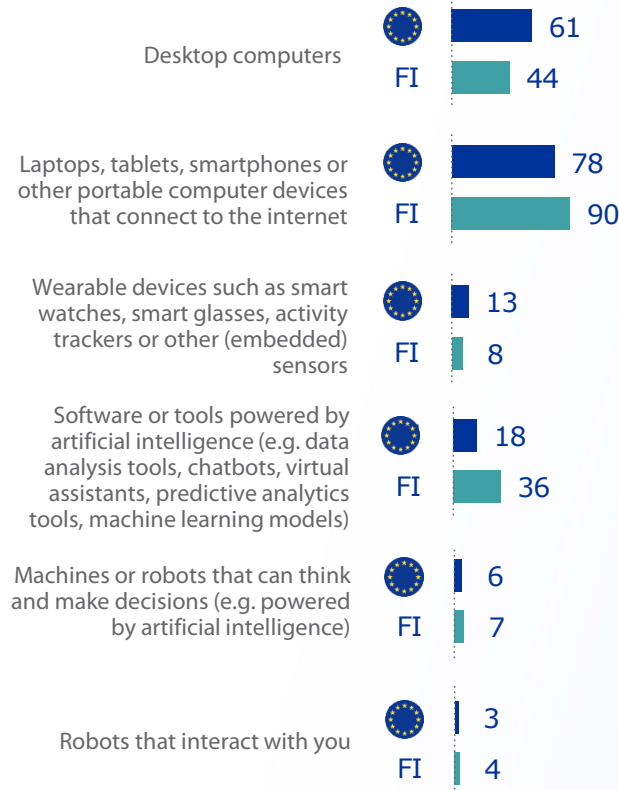
## Initiatives to prevent mental health issues

**E1** Are any of the following initiatives available in your workplace? (% 'Yes')

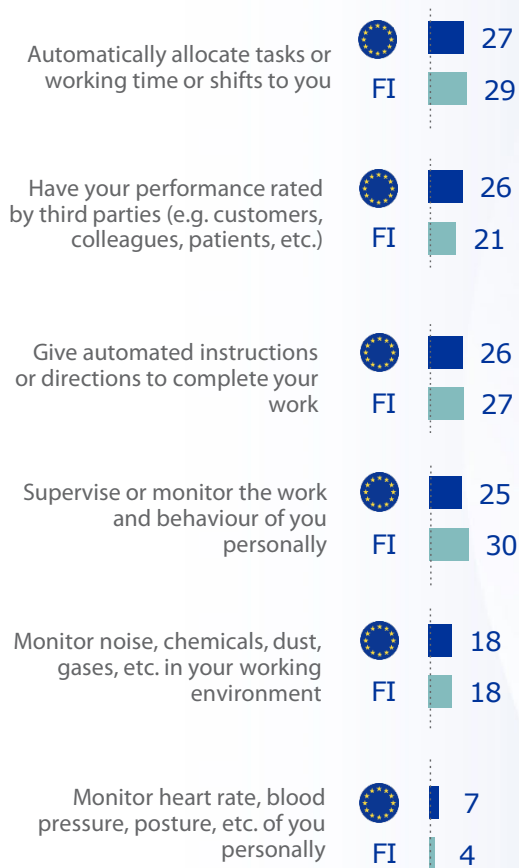


## Use of digital technologies in the workplace

**DX7** Do you use any of the following digital technologies for your main job? (% 'Yes')



**A2** To your knowledge, does the organisation where you work use digital technologies to...? (% 'Yes')



## Risks related to digitalisation

**A1** Would you say that the use of these digital technologies in your workplace...? (% 'Yes')

