



# HEALTHY WORKPLACES SUMMIT 2022

## Report from parallel session 1 INSPECTION OF MSDs PREVENTION IN ENTERPRISES – CHALLENGES AND INNOVATIVE SOLUTIONS

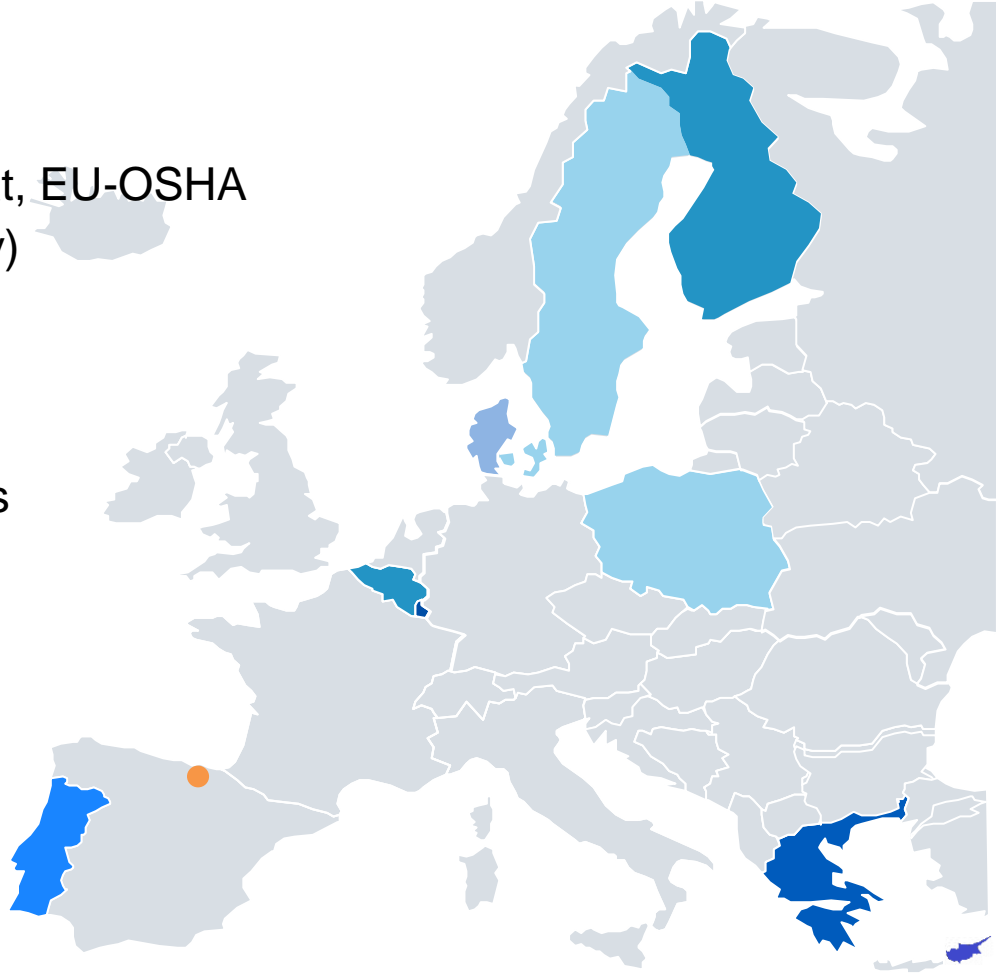
Bilbao 14 – 15 November 2022

Karolina Głowczyńska-Woelke  
WG EMEX, NLJ Poland

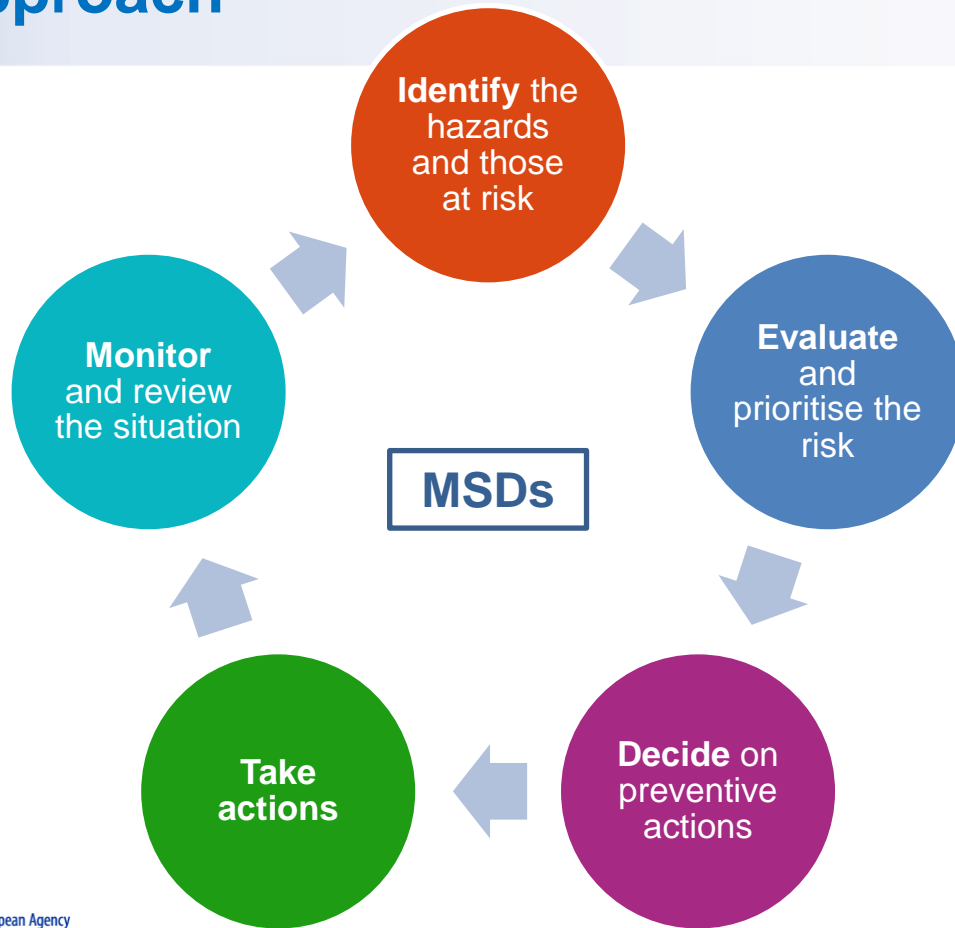


# SLIC Campaign in numbers

- Preparation: 9 countries, SLIC Secretariat, EU-OSHA
- Execution: 27 countries (26 EU + Norway)
- 2621 inspections
- Over 1000 labour inspectors trained
- All sizes of enterprisers visited
- All inspections under the same guidelines (aim: the same level of enforcement)
- One online tool for data collection
- 5 sectors:
  - Food industry,
  - Construction,
  - Transport & couriers activities,
  - Hairdressers & barber shops,
  - Healthcare & social care



# Approach



- Organisational & psychosocial factors
- Individual factors
- Physical risk factors

# Learnings and solutions



**Elimination:** robotization of part of the line/ installation of equipment that allows the automation of tasks



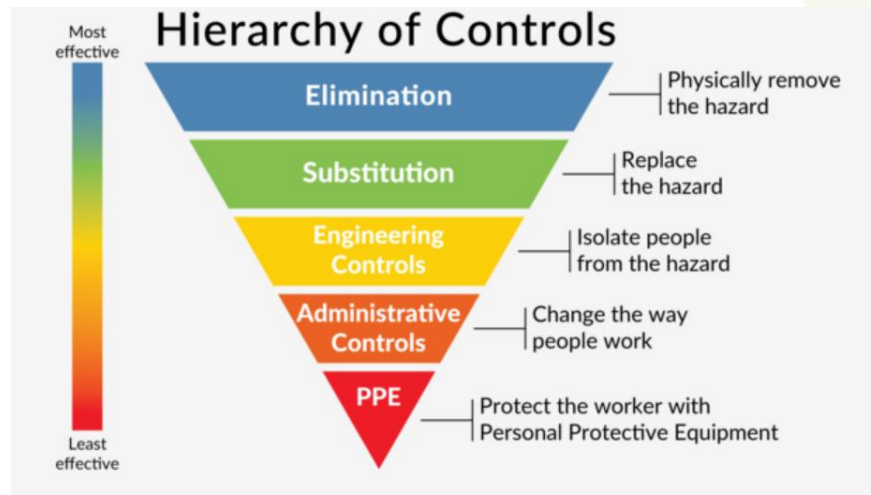
**Technical devices:** Lifting equipment anti-fatigue mats, foot rests and tables of different heights



**Organizational solutions:** breaks for rest or for exercises (warm-up and hand stretching exercises during the working event), redesigning the workstation



Fot. stock.adobe



<https://makesafetools.com/osha-hierarchy-of-controls/>

# Examples

## Hairdressers – learning examples



Even though the majority of the employers implemented prevention measures, not all conducted a risk assessment for the employees.



Some employers decided to redesign the workplace and exchange equipment, such as use of lighter hair dryers and provide ergonomically designed tools, such as scissors for left-handed employees.

## TRANSPORT AND COURIER SECTOR – Innovative Solutions

### ■ Cyprus – Innovative Solution for Airport Baggage Handlers (2)



“Lift Suit” used by kneeling workers inside aircraft baggage compartments



“Lift Suit” used by workers loading bags on conveyor belts at ramp level

➔ Preliminary results indicate reduction in potential strain on the workers' Musculoskeletal System

## Physiotherapist's motto and message



“Guidance and MSD RA comes along with the work”



“Through routines we achieve more time. When the inhabitant is independent, care is easier”



“I strongly believe in multi-professional co-operation to reduce MSD”

## Learnings from inspections in food and drink industries in Poland with focus on workers perspective

### Innovative solution:

Kielce: one inspections in large group (> 249)



Packing mayonnaise and mustard - in order to avoid reaching the pallet level, the employer purchased lifting carts for each of the four production lines.

## Learnings from inspections in Construction sector in Portugal

### ■ Rolling winch

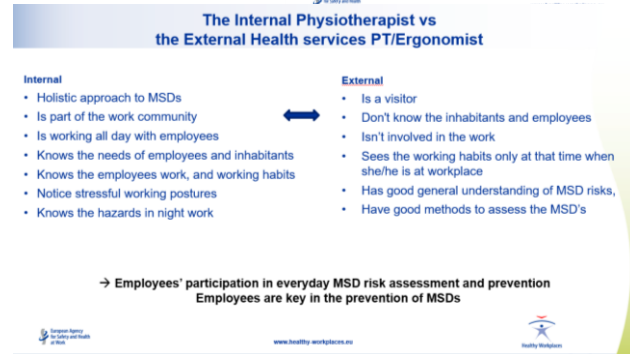
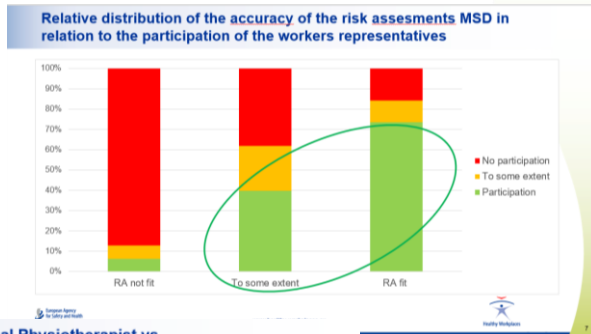


### ■ Sheet metal grippers



# Worker`s participation and perspective

- The presence of workers (or their representatives) in process of RA may favorably influence the quality of the result (in companies where employees participated, the RA proces was more often fit for purpose, main risk factors for MSDs were identified and assessed)
- The workers' representatives for OSH involvement in mutual exchange of information with labour inspectors
- The common aim is to increase:
  - the awareness of employers and employees in the field of methods and ways of preventing MSDs in the work environment,
  - knowledge of the regulations concerning manual handling of loads among employees.



# Conclusions

- Occupational safety and health is an investment
- Engagement of Top Management is a starting point to comprehensive and successful risk assessment process
- Workers` participation in RA process is essential for their engagement in work performance with focus on safety
- There may be a need to individual approach – do so, especially when vulnerable groups of workers are concerned
- Campaigns dedicated to one subject can be effective. Knowledge of basics and repetition of tasks is the base to experience for all actors in the working process
- Labour inspectors with the advisory and enforcement role – keep the balance
- Campaign raised the awareness, follow up inspections will be conducted in some countries

# THANK YOU