



Joint Programming Initiative

More Years, Better Lives

The Potential and Challenges of Demographic Change

MORE YEARS
BETTER LIVES

The Joint Programming Initiative

“More Years, Better Lives.
The Potential and Challenges of Demographic Change
(JPI-MYBL) ”



Joint Programming Initiative

More Years, Better Lives

The Potential and Challenges of Demographic Change

MORE YEARS
BETTER LIVES

Aims of the JPI-MYBL

- Elaborate a European **Strategic Research Agenda (SRA)** to identify research gaps, define adequate implementation (joint) activities and formulate recommendation to political stakeholders.
- Better coordination of national/regional and EU activities relevant for Demographic Change
- Exchanging best practice, pooling of expertise/financial resources and performing joint activities to provide scientifically proven data to tackle problems related to Demographic Change efficiently.
- Gain understanding of the multi-faceted phenomenon Demographic Change by a cross-disciplinary and holistic approach and make use of the economic potentials of an Ageing European society.
- Have an impact on National and EU Agenda Setting (Horizon 2020)



Joint Programming Initiative

More Years, Better Lives

The Potential and Challenges of Demographic Change

MORE YEARS
BETTER LIVES

Countries supporting the JPI

14 Members



Austria



Belgium



Finland



Denmark



Germany



Italy



Netherlands



Poland



Canada



Sweden



Switzerland



Spain



UK



Norway

Observers

France, Croatia, Turkey



Joint Programming Initiative

More Years, Better Lives

The Potential and Challenges of Demographic Change

MORE YEARS
BETTER LIVES

Web: www.jp-demographic.eu



Joint Programming Initiative

More Years, Better Lives

The Potential and Challenges of Demographic Change

[Kontakt](#) [Imprint](#) [Anmelden](#)

MORE YEARS
BETTER LIVES



[Startseite](#)

[Willkommen](#)

[About](#)

[Information](#)

[Contact](#)

[Nachrichten](#)

Discussion Papers of JPI Working Groups
online
[06.03.2013](#)

J-AGE Project Started on 1 September
[02.09.2012](#)

Commission welcomes Council
endorsement of JPI "More Years, Better
Lives".
[13.10.2011](#)

[Termine](#)

Societal Advisory Board Meeting
Brussels,
[26.03.2013](#)

General Assembly Meeting
Oslo,
[13.06.2013](#)

Work, Well-being and Wealth: Active
Ageing at Work
Helsinki,
[26.08.2013](#)

[Kommende Termine...](#)

Willkommen

Joint Programming ist ein neuer forschungspolitischer Ansatz um Zusammenarbeit und Kooperation in Forschung und Entwicklung zur Bewältigung gesellschaftlicher Herausforderungen in Europa zu fördern. Die Joint Programming Initiative (JPI) "More Years, Better Lives - The Potential and Challenges of Demographic Change" hat sich das Ziel gesetzt, nationale und europäische Forschungsprogramme (und deren Träger), die sich mit dem demografischen Wandel in Europa befassen, zusammenzubringen.

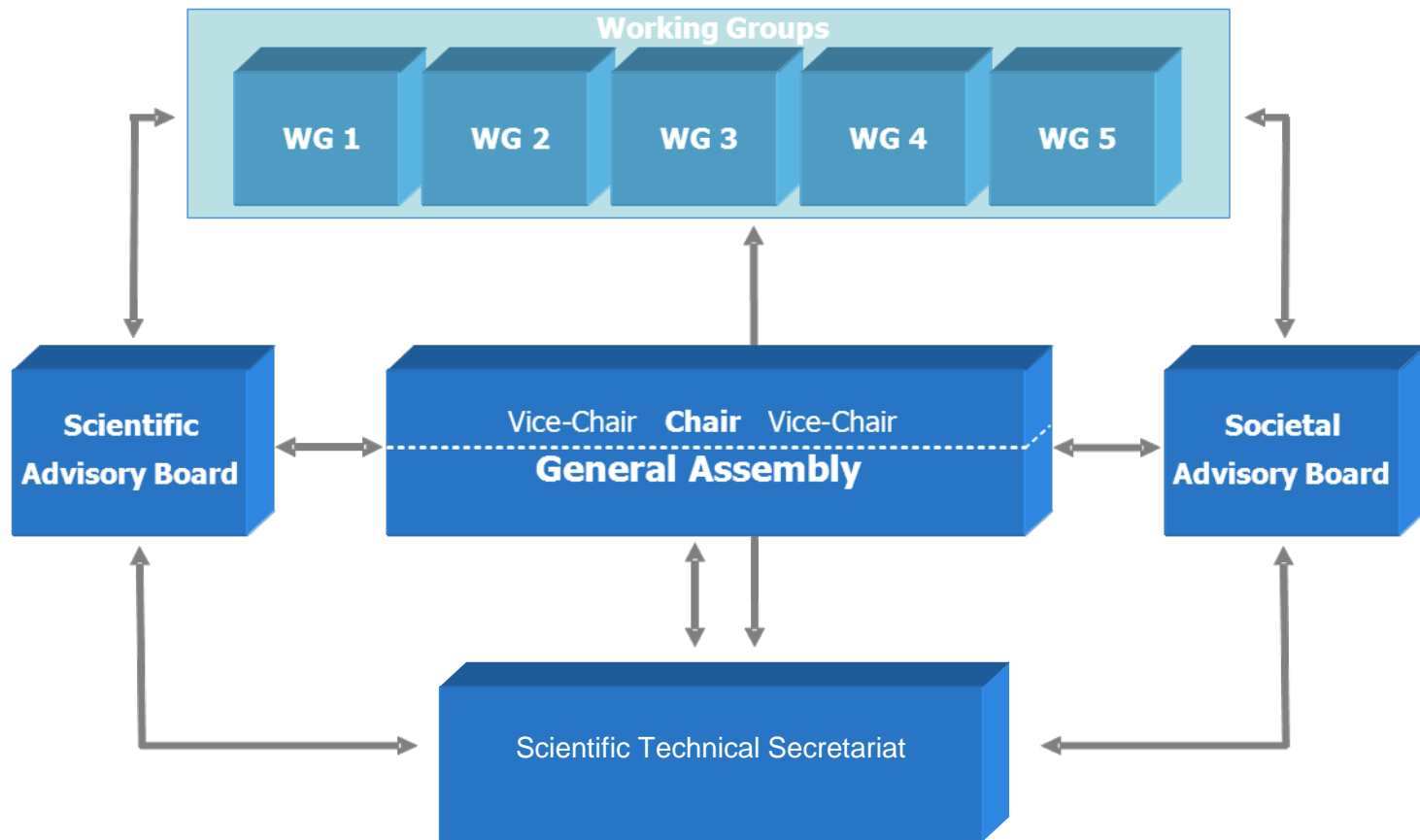
Der demografische Wandel betrifft zahlreiche Gesellschaftsbereiche: die Gesundheitsversorgung und Pflege älterer Menschen, die Sozialversicherungssysteme und den Arbeitsmarkt, das Bildungssystem sowie die Entwicklung ländlicher und urbaner Räume und Infrastrukturen. Die Joint Programming Initiative verfolgt deshalb einen transnationalen, multidisziplinären Ansatz. Sie vereint Forscherinnen und Forscher aus unterschiedlichen Disziplinen und Forschungszusammenhängen, um den Herausforderungen dieser Entwicklung zu begegnen und das vorhandene positive Potenzial dieses Wandels durch gemeinsame Forschungsanstrengungen zu nutzen.

Gegenwärtig sind 13 europäische Staaten an der Initiative beteiligt.





JPI Governance Model





Joint Programming Initiative

More Years, Better Lives

The Potential and Challenges of Demographic Change

MORE YEARS
BETTER LIVES

JPI „Troika“

Prof. Marja Vaarama

National Institute for Health and Welfare,
Finland

Chair

Dr. Rosita Cottone

Federal Ministry of Education
and Research, Germany

Vice-Chair

Prof. Paolo M. Rossini

Catholic University of Rome, Italy

Vice-Chair



Joint Programming Initiative

More Years, Better Lives

The Potential and Challenges of Demographic Change

MORE YEARS
BETTER LIVES

Composition of the Scientific Advisory Board

Title	First Name	Family Name	Nationality	Discipline	Function
Prof. Dr.	Erik	Buskens	NL	Medical Technology Assessment	WG1 Chair
Prof. Dr.	Rosa	Gomez-Redondo	ES	Population Studies	WG1 Vice-Chair
Prof. Dr.	Eskil	Wadensjö	SE	Social Policy	WG2 Chair
Dr.	Andreas	Motel-Klingebiel	DE	Sociology/Gerontology	WG2 Vice-Chair
Prof. Dr.	Peter	Nolan	UK	Economics, Industrial Relations	WG3 Chair
Prof. Dr.	Mikko	Härmä	FI	Occupational Health	WG3 Vice-Chair
Prof. Dr.	Stephen	McNair	UK	Adult Education	WG4 Chair
Dr.	Tine	Fistrup	DK	Geronto-Pedagogics	WG4 Vice-Chair
Prof. Dr.	Jens	Dangschat	AT	Urban/Rural and Spatial Sociology	WG5 Chair
Dr.	José Javier	Yanguas Lezáun	ES	Biological Psychology	WG5 Chair
Prof. Dr.	James	Vaupel	DE	Demography	External Expert
Prof. Dr.	Mats	Thorslund	SW	Sociology	External Expert
Prof. Dr.	Marie Eve	Joël	FR	Economy	External Expert
Prof. Dr.	Marja	Jylhä	FIN	Gerontologist	External Expert
Prof. Dr.	Carol	Jagger	UK	Epidemiology of Ageing	External Expert
Prof. Dr.	Stefano	Cappa	IT	Neurologist	External Expert



Joint Programming Initiative

More Years, Better Lives

The Potential and Challenges of Demographic Change

MORE YEARS
BETTER LIVES

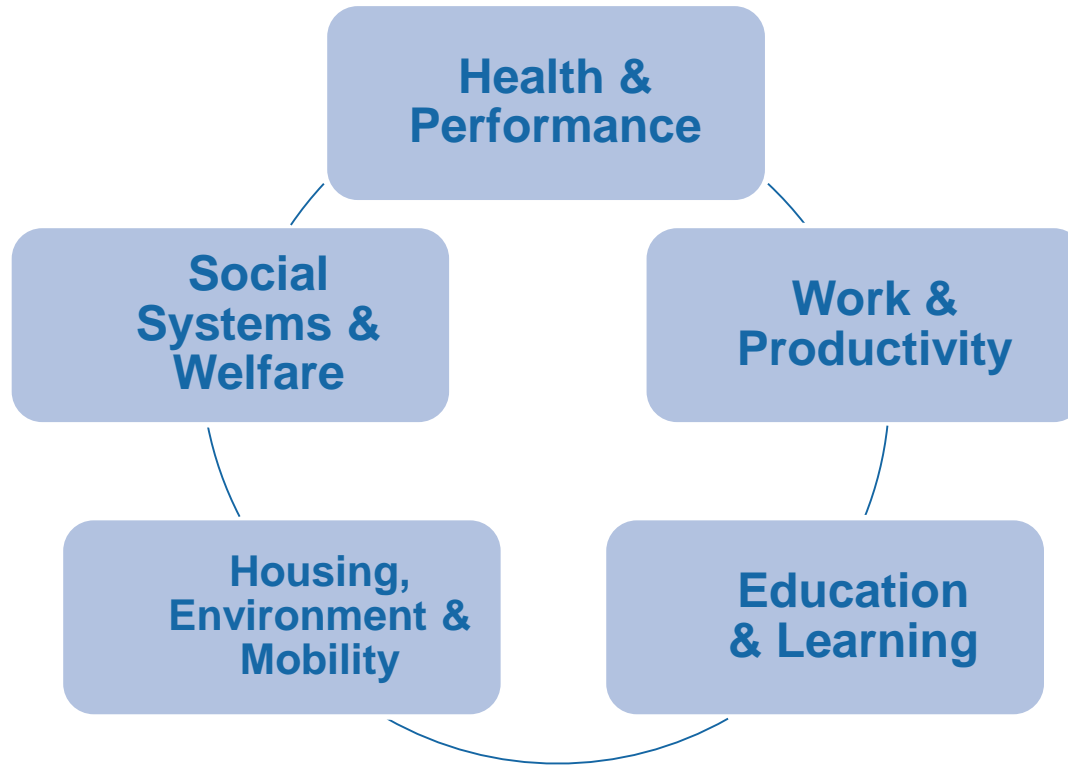
Composition of the Societal Advisory Board

Members of the Societal Advisory Board

- **Age Platform Europe**, Anne-Sophie Parent, Secretary General
- **Council of European Municipalities and Regions**, Frédéric Vallier, Secretary General
- **Eurocarers**, Robert Anderson, President
- **Eurochambres** , Alessandro Barberis, President
- **European Association for the Education of Adults**, Sue Waddington President
- **European Hospital and Health Care Federation HOPE**, Pascal Garel, Chief Executive
- **European Social Network** , Lars-Göran Jansson, President
- **European Trade Union Confederation**, Claudia Menne, Confederal Secretary
- **Hospitaller Order of St. John of God**, Carlo Galasso, European Officer
- **Insurance Europe**, Timo Silvola, Head of Public-Private Partnership & Life Insurance, in Finnish Federation of Financial Services
- **International Society for Gerontechnology**, Alain Franco, President
- **European Association of Regional and Local Authorities for Lifelong Learning**



Research for Demographic Change requires an interdisciplinary and holistic approach across different domains



5 Working Groups with about 80 leading scientists from Europe to prepare a cross-sectoral, multi-disciplinary Strategic Research Agenda



Joint Programming Initiative

More Years, Better Lives

The Potential and Challenges of Demographic Change

MORE YEARS
BETTER LIVES

Timeline towards final SRA

April:
SRA -1

30-31 May:
SAB/SOAB/WP5
meeting SRA-1

12 -13 June:
SRA-1 on agenda
in GA meeting

September:
SRA -2
National & online
consultation (6 wks)

Mid Oct – mid Nov:
Collecting feedback
& editing SRA-2

7 November:
SAB/SOAB
meeting SRA-3

January 2014:
GA votes on final
SRA

March 2014:
SRA launch



Joint Programming Initiative

More Years, Better Lives

The Potential and Challenges of Demographic Change

MORE YEARS

BETTER LIVES

Research topics of the Working Groups identified for the SRA (WG reports)



Joint Programming Initiative

More Years, Better Lives

The Potential and Challenges of Demographic Change

MORE YEARS

BETTER LIVES

Research topics of the Working Group Health & Performance

- Health and functioning
 - Inter-individual differences: cohorts, generations and disparities in ageing
 - Relevant goals and outcomes in research on health and functioning
- Promotion of health and functioning
- Systems of care - content and organisation
- Integrated research and common databases



Joint Programming Initiative

More Years, Better Lives

The Potential and Challenges of Demographic Change

MORE YEARS
BETTER LIVES

Research topics of the Working Group Social Systems & Welfare

- Life course changes and institutional fit
- Pensions
- Care provision
- Employment performance
- Gender aspects
- New modes of governance
- Distributive performance
- Economic performance
- Addressing the underlying data issues



Joint Programming Initiative

More Years, Better Lives

The Potential and Challenges of Demographic Change

MORE YEARS
BETTER LIVES

Research topics of the Working Group Work & Productivity

- Productivity: High road, low road and the Ageing Society
- Sustainable Work and Health/Well-Being
- Employment Systems and Work-life-participation
- Work organisation and Management
- Societal Choices & Consequences



Joint Programming Initiative

More Years, Better Lives

The Potential and Challenges of Demographic Change

MORE YEARS
BETTER LIVES

Research topics of the Working Group Education & Learning

- How adequate is our data?
- What is the rationale for investment in older people's learning?
- Does learning contribute to social inclusion or exclusion?
- What is the relationship between learning and cognitive decline?
- What motivates older people to learn, and what are the benefits?
- What are the implications of changing technologies?
- What would an ideal range of opportunities for learning look like?
- What institutional structures are most effective at supporting older people's learning?



Joint Programming Initiative

More Years, Better Lives

The Potential and Challenges of Demographic Change

MORE YEARS
BETTER LIVES

Research topics of the Working Group Housing, Environment & Mobility

- Current and future spatial distributions of ageing populations
- Physical and social environments for older people
- Planning, designing, financing and organising physical and social environments involving older people
- Impact of social, economic and spatial inequalities on older adult's living conditions
- Role of residential relocations in promoting well-being for older people
- Transport and mobility for ageing societies



Joint Programming Initiative

More Years, Better Lives

The Potential and Challenges of Demographic Change

MORE YEARS
BETTER LIVES

Fast-Track Data-Project



Rationale

- Help **improve the quality and relevance of data**, and **knowledge about data** sources among scientists and policymakers.

- **“Mapping” the range of data sources** available on ageing, at European , national and more local level:
 - **Describe** what data is available
 - **Examine** whether there are major gaps in the data available;
 - **Influence** those collecting data to use more appropriate models;
 - **Inform** researchers and policymakers about potential data sources, their strengths, limitations, and comparability.



Joint Programming Initiative

More Years, Better Lives

The Potential and Challenges of Demographic Change

MORE YEARS

BETTER LIVES

Participation

- **11 out of the total 14 JPI member states:**
 - Austria, Belgium, Denmark, Finland, France, Germany, Italy, the Netherlands, Spain, Sweden, and the United Kingdom
 - Plus Croatia with a **JPI observer** status.
- The **Scientific Working Group** was led by Prof. **James W. Vaupel**, Director of the Max Planck Institute for Demographic Research and member of the JPI Scientific Advisory Board.



Joint Programming Initiative

More Years, Better Lives

The Potential and Challenges of Demographic Change

MORE YEARS

BETTER LIVES

Link to the Strategic Research Agenda of JPI MYBL

- The fast-track data project operates **within the broad scope** of the Strategic Research Agenda (SRA).
- **Informs** drafting of the **SRA** and **helps clarify** whether there are **major data issues**, which need inclusion in the SRA itself.
- The main focus is on data relevant to **people over 50**.



Joint Programming Initiative

More Years, Better Lives

The Potential and Challenges of Demographic Change

MORE YEARS

BETTER LIVES

Thematic areas of data

1. Health and performance
2. Social systems and welfare
3. Work and productivity
4. Education and learning
5. Housing, urban development and mobility
6. Public attitudes towards old age
7. Social, civic and cultural engagement
8. Uses of technology
9. Wellbeing
10. Intergenerational relationships



Joint Programming Initiative

More Years, Better Lives

The Potential and Challenges of Demographic Change

MORE YEARS

BETTER LIVES

Data selection

- Covered data sources were of **high quality, quantitative, recent**, if possible **longitudinal** or from **large datasets**, and **policy-relevant**.
- Where **no data** was available, or where data was limited or of doubtful quality, this was **also noted**. It may indicate the need for further research, or to changes in routine data collection.
- **Data sources** included registry data, regular surveys, occasional surveys, longitudinal surveys, and qualitative evidence.



Results

- **Review of a total of 337 national and European-wide data sources**

12 country reports

Austria, Belgium, Denmark, Finland, France, Germany, Italy, Netherlands, Spain, Sweden, the United Kingdom plus Croatia

- Reports mainly deal with **statistical data** relevant to policymakers. A smaller section addresses **evidence on policies** and provides **information** about where to find information about **national policies**.

Main results and policy recommendations

- Access to data
- Sub-Population Coverage
- Topic Coverage
- Methodological Issues

Website

www.jpi-dataproject.eu



Input for the SRA

Current data misses key groups

The very old

- Their living conditions, preferences, wellbeing and quality of life.

Those living in residential institutions

- Constitutes a high proportion of older people, missed by many surveys.

Migrants

- Different migrant groups may have very different characteristics and circumstances, which means very small sample sizes. Also important to understand internal migration within the EU.

Highest and lowest socio-economic status groups

- Often the target groups of social policymaking.



Input for the SRA

Other problems

Multiple levels of data collection and policy accountability.

- National, regional and local data often not joined up

Frequency of data collection.

- Published data is often out of date, and data collection systems can be slow to pick up new issues like information technology or social media.

Population sizes for surveys.

- Small countries have difficulty generating appropriate sample sizes

Relative importance of self-reporting vs. objective reporting.

- Objective factors may be inadequate proxies for wellbeing.



Joint Programming Initiative

More Years, Better Lives

The Potential and Challenges of Demographic Change

MORE YEARS
BETTER LIVES



Joint Programming Initiative

More Years, Better Lives
The Potential and Challenges of Demographic Change

Suchen

Data Mapping Project

[HOME](#) [ABOUT THE PROJECT](#) [PARTNERS](#) [IMPRINT](#)

Choose a Topic

Health and Performance	Social Systems and Welfare
Work and Productivity	Education and Learning
Housing, Urban Development and Mobility	Public Attitudes towards Old Age
Social, Civic and Cultural Engagement	Uses of Technology
Wellbeing	Intergenerational Relationships

Choose a Country

[Country Reports](#) [European Databases](#)



Joint Programming Initiative

More Years, Better Lives

The Potential and Challenges of Demographic Change

MORE YEARS
BETTER LIVES



Joint Programming Initiative

More Years, Better Lives
The Potential and Challenges of Demographic Change

Suchen

Data Mapping Project

[HOME](#) [ABOUT THE PROJECT](#) [PARTNERS](#) [IMPRINT](#)

France - Topics

Health and Performance	Social Systems and Welfare	Work and Productivity	Education and Learning
Housing, Urban Development and Mobility	Public Attitudes towards Old Age	Social, Civic and Cultural Engagement	Uses of Technology
Wellbeing	Intergenerational Relationships	All Databases	





Joint Programming Initiative

More Years, Better Lives

The Potential and Challenges of Demographic Change

MORE YEARS
BETTER LIVES

CONTACTS

JPI Secretariat
c/o VDI/VDE-IT
Steinplatz 1
10623 Berlin
Germany