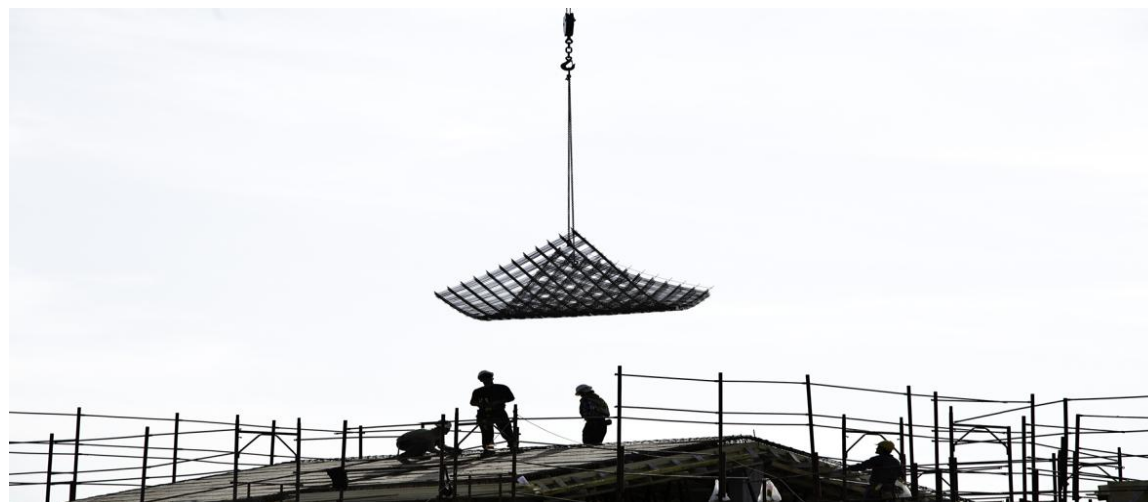


HEALTHY WORKPLACES

GOOD FOR YOU.
GOOD FOR BUSINESS.



OiRA & Maintenance

Closing Event

Lorenzo MUNAR

Project Manager, EU-OSHA



- **Risk assessment & micro and small enterprises**
- **OiRA project / tool**
- **OiRA modules on maintenance**



1. Risk assessment & micro and small enterprises



Challenges to overcome

- RA is not universally spread
- Quality of the RA to be improved
 - Not a systematic/structured approach
 - Not all the/main risks covered



Reasons for low compliance

- Lack of awareness
- Poor ability/skills to manage health and safety
- Lack of specific and comprehensible information and guidance
- Lack of resources



2. OiRA project / tool

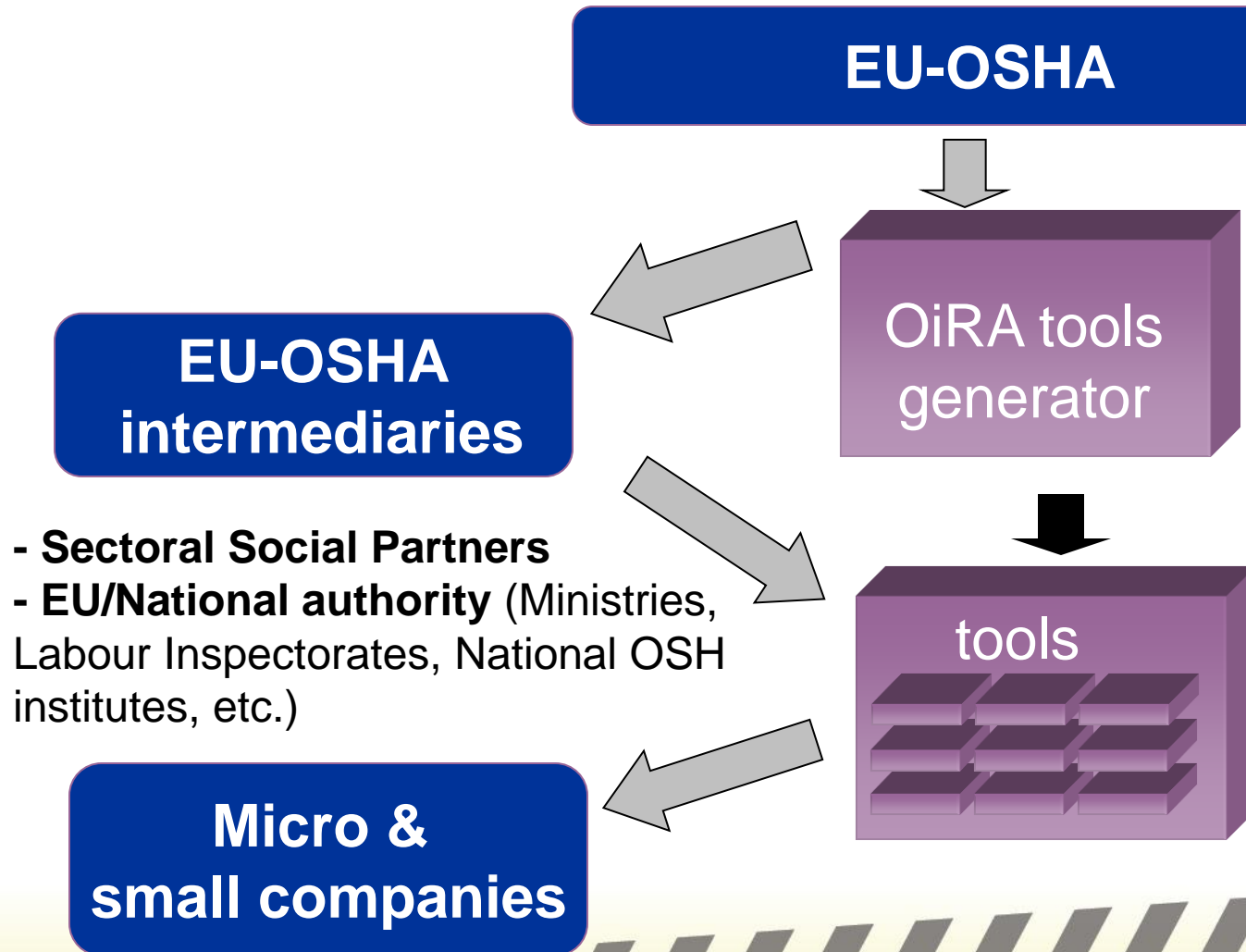


Solution OiRA

- Free of charge
- Easily accessible
- Easy to use
- Sector-specific
 - Risks inherent to a sector can be clearly identified
 - OiRA tools should cover all/at least the main risks/activities in each specific sector (including maintenance)



How OiRA tools are developed?



1 Prise de véhicule

2 Attelage

3 Mise à quai

4 Chargement /
déchargement

5 Arrimage

6 Départ du quai

7 Conduite - Circulation
routière

8 Arrivée chez le client

9 Maintenance de 1er
niveau



10 Activités administratives

Maintenance de 1er niveau

Le conducteur sait-il effectuer une maintenance de 1er niveau sur son véhicule ?

 Oui

 Non

[Précédent](#)

Le conducteur doit savoir comment entretenir son véhicule et disposer à bord de tout le matériel nécessaire pour effectuer ces vérifications. Dans le cas contraire, il est exposé à différents risques (chute en circulant autour de son véhicule, accident de la route en cas de défaillance de son véhicule, stress).

Veuillez écrire tout commentaire relatif à la question ci-dessus dans ce champ. Ces commentaires seront utilisés dans le plan d'action.





1 OSH Management

2 dd

2.1 The retail store



2.2 Work environment

2.3 Violence and
Harassment

2.4 Physical workload

2.5 Psychosocial workload

2.6 Work organisation

2.7 Personal Protective
Equipment

2.8 Vehicles

2.9 Risks posed by dogs

2.10 Client

3 as

The retail store

The electricity, gas and water supplies are in order and are well maintained.

Yes
 No

[Previous](#)

[Save and continue](#)



Some examples: all the exposed conductive parts are connected to the earthing system; all safety devices and switches are in place and they work well, there are measures in place to protect electrical equipment from water:

The electricity, gas and water supplies comply with the relevant safety regulations and are maintained by competent people in accordance with regulations.

LEGAL AND POLICY REFERENCES

Council Directive of 30 November 1989 concerning the minimum safety and health requirements for the workplace (first individual directive within the meaning of Article 16 (1) of Directive 89/391/EEC) (89/654/EEC).



3. OiRA modules on maintenance



OiRA modules by activity/risk

- Need identified to help developers of OiRA tools to deal with certain risks (psychosocial, MSDs) and activities (maintenance)
- Modules to be produced to help developers of OiRA tools to deal with these risks/activities in their sector

EU-OSHA

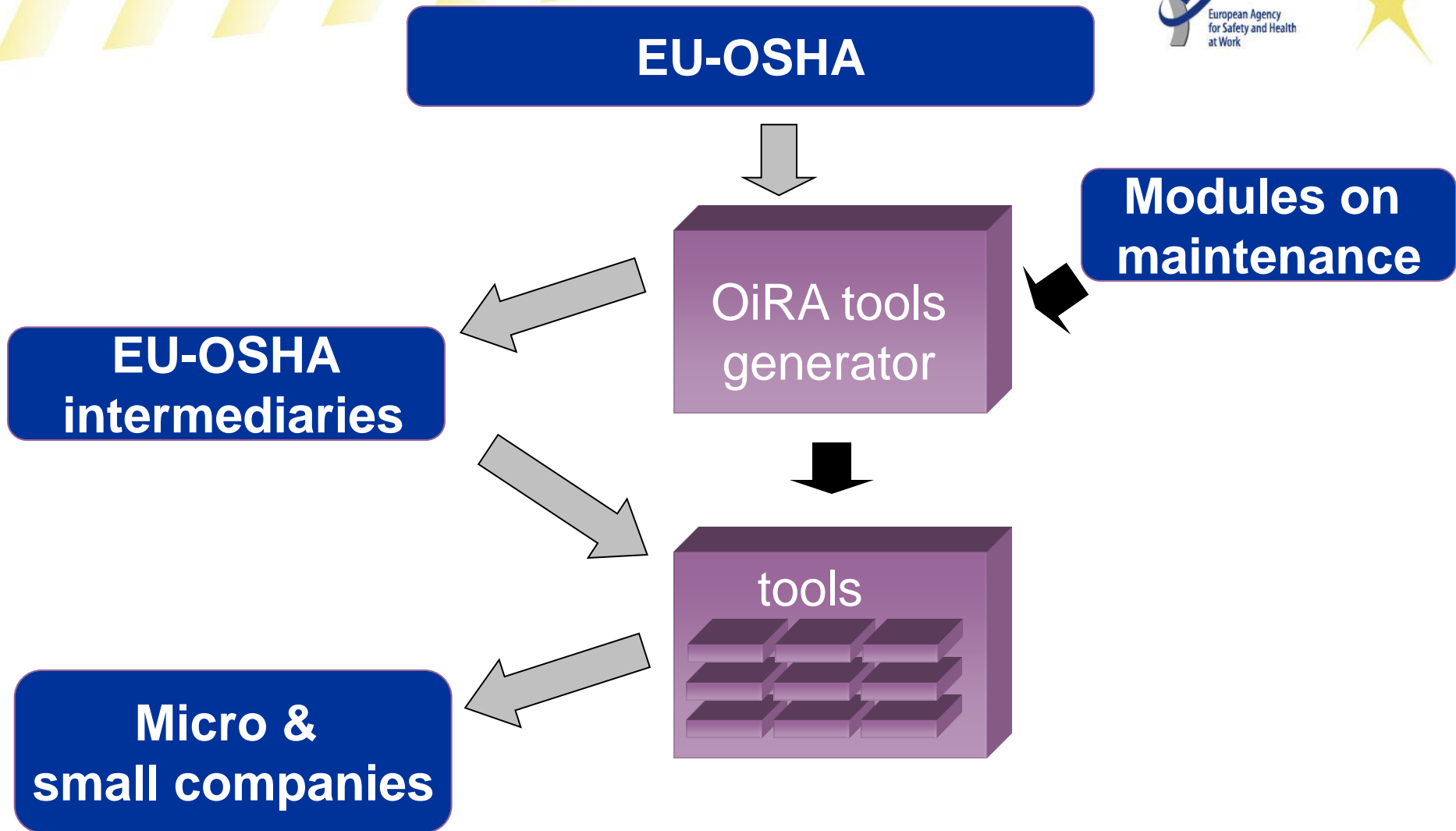
**Modules on
maintenance**

OiRA tools
generator

**EU-OSHA
intermediaries**

tools

**Micro &
small companies**





OiRA modules on maintenance

- EU-OSHA's Topic Centre will produce the modules on maintenance:
 - Based on the existing material produced/collected in the framework of the campaign
 - Taking into account the discussions/feedback from today



Validation of the modules

- The modules will be validated by/through the:
 - OiRA Community
 - OiRA Steering Committee
 - Experts on maintenance



Planning

- Specific request to be sent to the Topic Centre before end of the year
- OiRA modules on maintenance ready by December 2012



Legacy - Maintenance Campaign

- Make sure OiRA tools cover maintenance issues/related risks
- End-users (enterprises) using OiRA tools will deal with maintenance in a more systematic/structured way
- Convey the messages:
 - Maintenance is essential to keep the working environment safe and reliable
 - Maintenance itself is a high-risk activity



Thank you

Contact

Lorenzo Munar