

# Integrating Education and OSH into the Education Sector

Inspector Hilary Mooney  
Health and Safety Authority Ireland

Feb 2010

# Education Strategy

## Education Strategy

To mainstream health and safety at all levels of education

Develop curriculum supports and resources for educators

Develop best practice in education sector

Work in synergy with like-minded organisations





# Education Sector Stats

- Numbers employed in the education sector in Ireland (2007) = 139,100
- Number of full-time students in Irish institutions 2007/2008 = 943,599
- Number of Irish schools 2007/2008 (Primary & Post Primary) = 4,016





# 3 tiers of education

- The education system can be divided into 3 main tiers: Primary, Post-Primary (also called Second Level) and Third Level.

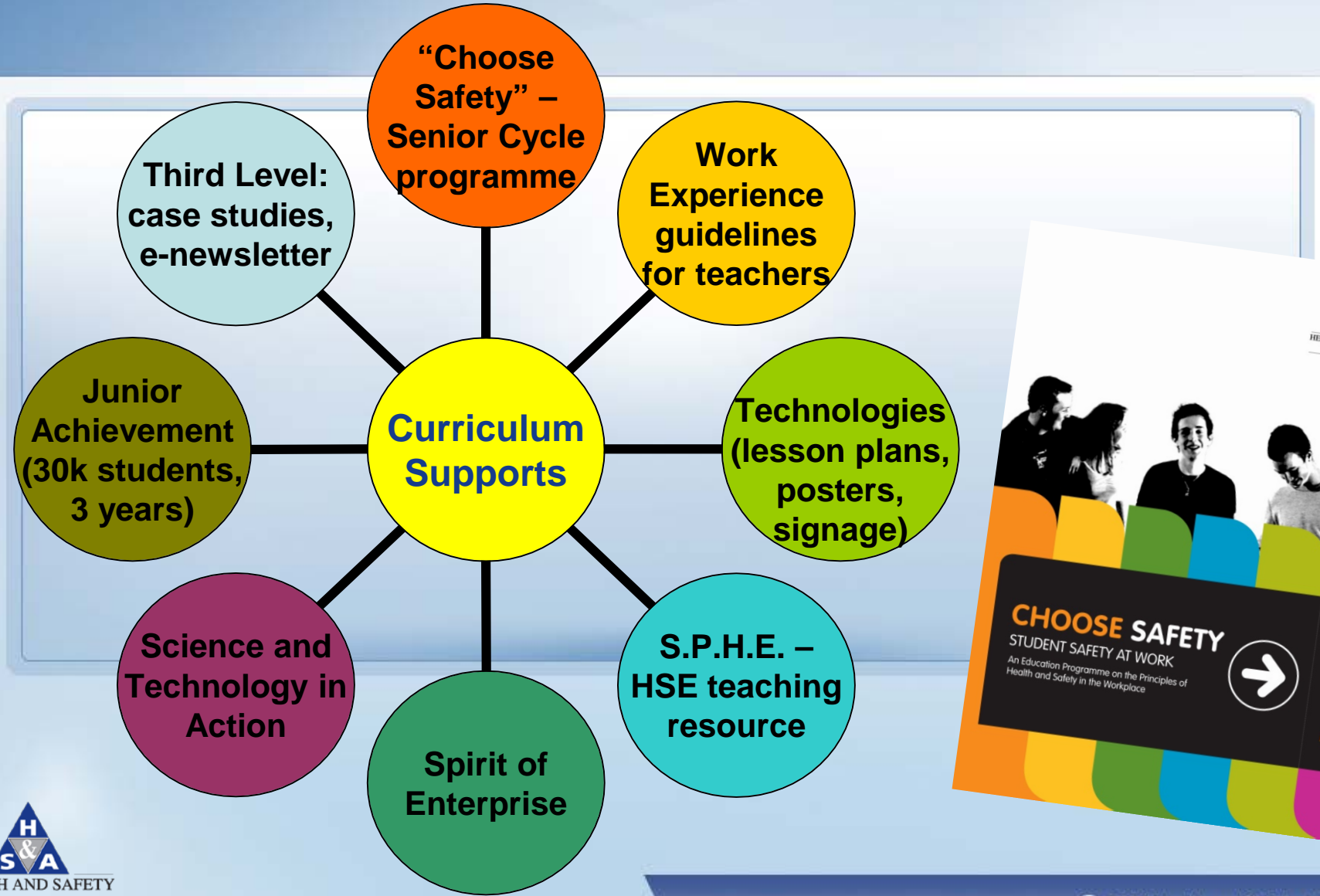


# Integrating OSH and Education



- The HSA are using a twin tracked approach to integrate OSH and Education into the Education System.
- The two approaches are
  1. Curriculum based approach
  2. Education sector management of OSH

# Curriculum Supports



# Education Sector Management



- Education sector – the conduit for delivering change
- Guidelines for managing safety in post primary schools
- Teacher Training
- E-learning (Science, Technologies, Principals)
- Compliance Inspections Carried out by HSA

# Technology in Education

## E-learning/m-learning

Free to access, self-directed, self-paced learning

- Technologies teachers
- Science teachers
  - Principals/safety officers in schools
    - launched in summer '09/achieved formal recognition by Dept of Ed
    - 422 primary school teachers have completed
- Senior Cycle students (learning mgt system)







# E-learning screen shots

The screenshot shows an e-learning interface for a lesson titled "Identifying Hazards in the Workplace". The main content area features a large yellow triangular warning sign with a black exclamation mark on the left. To the right, there are three cartoon illustrations of a green stick figure: one wearing a yellow hard hat and holding a power drill, one sitting at a desk with a red mark on their back, and one lifting a grey box with red marks on their back. A white text box at the bottom left of the main area says "Welcome to the Identifying Hazards in the Workplace lesson." The interface includes a navigation panel on the right with an "EXIT" sign at the top, followed by icons for a checkmark, three water bottles, a speaker, and a large letter 'A'. Below these is a "TOPICS" label and two arrow icons. At the bottom, there is a "Hazards" button with a globe icon, a wheelchair accessibility icon, a set of navigation buttons (back, pause, forward), and a "1 of 13" indicator.



# E-learning Screenshots

Knowledge and preparation is key: If you don't recognise that there is a hazard, you cannot prepare for it!

EXIT

TOPICS

Hazards

5 of 13

# Serious Gaming

- Developing software games for a new generation of learners (15-/18 year olds)
- linked to curriculum
- how do they learn?
- readily accessible and understood
- link to social networking sites
- Will be hosted on a third party website





# HSA Prevention and Compliance Unit collaboration for Post Primary School Inspections

- 2010 approx 400 inspections will be carried out by HSA inspectors in Primary and Post Primary Schools
- The inspector will look at the work activities being undertaken and statutory documentation required under the 2005 Act.
- **Approach will encompass:**
  - Advice; Guidelines produced to aid Schools
  - Enforcement action



# Field Inspection

- **Is there any documentation the school can use to devise these documents 'in-house'?**
- The HSA are producing a set of Guidelines for use in Schools. This will enable the school to generate a Safety Statement using the step-by-step information in the guidelines.
- The Guidelines also has Risk Assessment Templates so the individual teachers can use these to conduct Risk Assessments in their own classrooms.





# Guidelines for Post Primary Schools for Managing Health and Safety at Work

- Developed by a partnership approach by the
- Health and Safety Authority
- Department of Education
- State Claims Agency
- Schools Development Planning Initiative





# Guidelines for schools

Aims to:

- Assist schools plan, organise and manage an effective safety and health management system.
- Help schools evaluate current policies and practices according to the legislative requirements and best practice standards.
- Enable schools write or update their safety statements.
- Enable schools create or update their risk assessments.
- Facilitate school management and employees with their respective roles in operating and reviewing safety and health best practice.
- Reduce the administrative burden on schools.





# Guidelines- the sections

## ➤ **Introduction**

- Who should read these Guidelines?
- Essential Terms
- Why Manage Safety and Health?
- Who is responsible for Safety and Health in Schools?
- Board of Management Duties as employer
- Employee Duties
- Board of Management Duty of Care under Civil Law
- The Tort of Negligence
- Vicarious Liability
- Board of Management Duties under Occupier's Liability
- Types of Accidents and Incidents in Schools

## **Managing Safety in Schools**

- **Step 1:** Policy and Commitment
- **Step 2:** Planning
- **Step 3:** Implementation
- **Step 4:** Measuring Performance
- **Step 5:** Auditing and Review





# Guidelines- the sections

- **Frequently Asked Questions are divided into the following sections:**
- Legislation
- Safety and Health Management System
- Planning
- Roles and Responsibilities
- Safety Statement and Risk Assessment
- Accident Investigation and Reporting
- Further Information and Support





# Risk Assessments Listed

## **Art**

Art Room  
Ceramics  
School excursions/day trips  
Art Fire – Specialist rooms  
First Aid - Art  
Knives  
Manual handling  
Housekeeping  
Portable electrical appliances  
Housekeeping

## **Canteen**

Canteen  
Hazardous Substances - Maintenance  
Fire  
First aid - canteen  
Manual handling- canteen  
Portable electrical appliances- canteen  
Housekeeping- canteen

## **Other Sections include:**

Home Economics  
P.E.  
Science  
Technologies  
Maintenance  
Beauty Therapy  
Other activities  
Computers  
Cleaner  
Farm Machinery  
General School Areas  
Home Economics  
P.E.  
Science  
Technologies  
Maintenance  
Beauty Therapy  
Other activities  
Student Considerations  
Blank Risk Assessment Templates





# Guidance for schools

The HSA Education Sector Web Site will have links to all documentation relevant to schools from our web site.

- Department of Education and Science (DES) [www.education.ie](http://www.education.ie)
- State Claims Agency Web site [www.stateclaims.ie](http://www.stateclaims.ie)

Guidelines will be posted to Secondary Schools by the DES

Guidelines will be in a downloadable version on our web site.

All schools Primary or Post Primary will be able to download the Guidelines or Risk Assessments.

