



**Exchange of good practices in OSH  
Healthy Workplaces Campaign Partner event**  
Brussels, 13-14 June 2022



**IQF (ISHCCO Qualification Framework)  
appropriate qualifications of OSH – coordinators**  
ISHCCO  
International Safety & Health Construction  
Co-ordinator's Organisation  
www.ishcco.org  
Forum da Vinci, 4-6 Bd. Grande Duchesse Charlotte  
L-1330 LUXEMBOURG



**Content**

- ISHCCO
- MSD in Construction
- ISHCCO Qualification Framework
- Summary



www.healthy-workplaces.eu



**ISHCCO Members**

**ISHCCO**  
**International Safety and Health**  
**Construction Co-ordinators**  
**Organisation**  
Founded in 2002  
**European Umbrella Association**  
Co-ordinators for Safety and Health Matters at the  
Project  
Member Countries / Organisations  
AT: BAUKO, BE: VC-CS, CH: Lobsiger & P. GmbH,  
CY: CYACE (SPOLMIK), CZ: CSSK, DE: VSDI &  
VSGK,  
DK: IDA, ES: ACSYS, FR: GOK SPS,  
IT: AIAS, LU: ACSL, PT: OET, SK: BOZPO  
representing  
**60.000 SHCC**  
(Safety and Health Construction Co-ordinator)

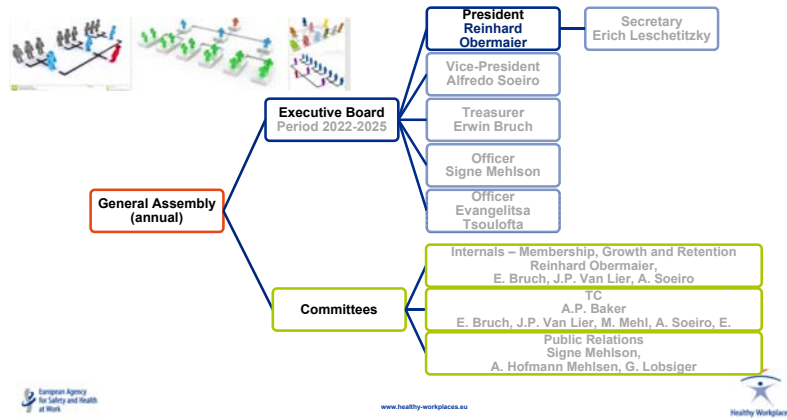


www.healthy-workplaces.eu

[https://europa.eu/european-union/about-eu/countries\\_en](https://europa.eu/european-union/about-eu/countries_en)



## ISHCCO Organisation



## ISHCCO Mission



- **Standards of Qualification and Education**
- **Unified voice of the SHCC vis-à-vis the European Institutions**
- **Cooperation with other actors**



## MSD in Construction (MusculoSkeletal Disorders)

### Bauarbeiter: Jeder zweite hat Rückenschmerzen

www.Handwerksblatt.de  
Betriebsführung April 2008

- Über die Hälfte der Beschäftigten im Baugewerbe klagt über Kreuzschmerzen. Das ergab eine repräsentative Umfrage bei Erwerbstätigen.
- Ursachen der Schmerzen und Rückenerkrankungen sind lang dauernde Überkopfarbeit, Arbeiten mit gebeugtem Oberkörper oder häufiges Bücken und Belastungen in der Freizeit.

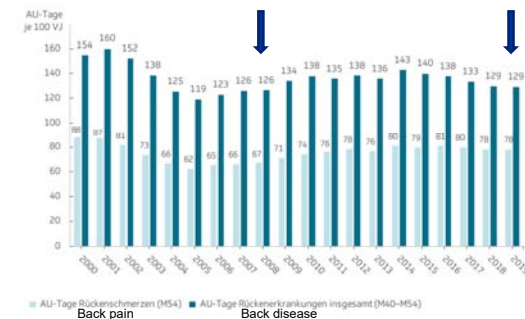
### Construction workers: one in two has back pain

www.Handwerksblatt.de  
Operational Management April 2008

- **More than half** of construction workers complain of **low back pain**. This was the result of a representative survey of employed workers.
- The causes of the pain and back disorders are long periods of overhead work, work with the upper body bent over, or frequent bending and straining during leisure time.

## MSD – Trend DE

TK, Germany 2020  
AU-Tage aufgrund von Rückenbeschwerden in den Jahren 2000 bis 2019  
Days of incapacity to work due to back complaints 2000 – 2019



Improvements?  
worthy of mention?

## MSD - root cause

### Heavy loads manually handled

- sand-lime brick,
- bagged goods,
- prefabricated components (windows, doors, etc.)



### Posture - bent over posture

- kneeling
- crouching
- shovelling, pickling

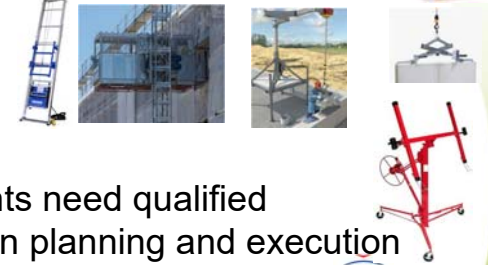


## MSD & SHCC

- Avoiding
  - manual transports and
  - manual positioning, handling



- Suitable
  - transport ways
  - transport equipment
  - work equipment



Improvements need qualified  
S&H - Coordination in planning and execution

## ISHCCO Publications

### Publications of ISHCCO

#### Reports on the Implementation of the Directive 92/57

#### ISHCCO Qualification Framework (IQF)

Standard of Qualifications of SHCC

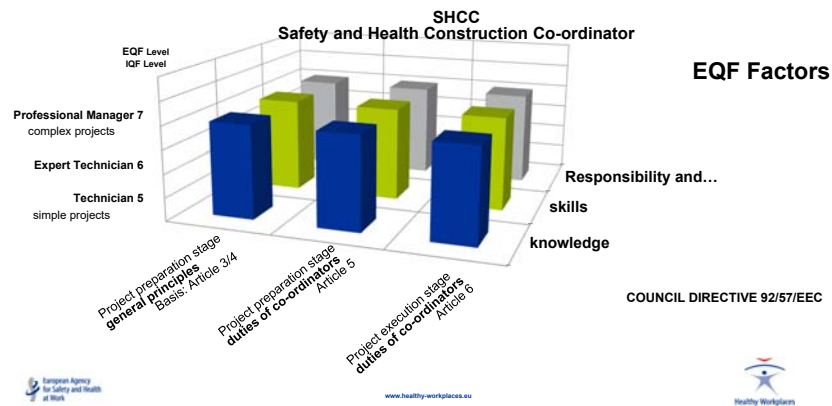
- Translation matrix in between different (national) educational systems Based on the European Education Framework
- Applicable to
  - Education and Trainings
  - Benchmarking
  - Project classification

## IQF

### Based on the European Education Framework & EU-Regulation

- EQF-Factors
    - knowledge,
    - skills,
    - responsibility and autonomy
  - EQF-Levels applied
    - Level 5: technician
    - Level 6: expert technician
    - Level 7: professional manager
  - IQF-Contents
    - Legal tasks (EU-Regulation)
    - Activities and measures to be coordinated in detail
- simple projects  
– complex projects

## IQF



13

## IQF Descriptors

EQF Level	Knowledge	Skills	Responsibility and Autonomy
Level 5	<b>Comprehensive</b> specialised, factual and theoretical <b>knowledge</b> within a field of work or study and an awareness of the boundaries of that knowledge	A <b>comprehensive</b> range of cognitive and practical <b>skills</b> required to develop creative solutions to abstract problems	<b>Exercise management</b> and supervision in contexts of work or study activities where there is unpredictable change; review and develop performance of self and others
Level 6	<b>Advanced</b> knowledge of a field of work or study, involving a critical understanding of theories and principles	<b>Advanced skills</b> , demonstrating mastery and innovation, required to solve complex and unpredictable problems in a specialised field of work or study	<b>Manage complex</b> technical or professional activities or projects, taking responsibility for decision-making in unpredictable work or study contexts; take responsibility for managing professional development of individuals and groups
Level 7	<b>Highly specialised</b> knowledge, some of which is at the forefront of knowledge in a field of work or study, as the basis for original thinking and/or research. Critical awareness of knowledge issues in a field and at the interface between different fields	<b>Specialised problem-solving skills</b> required in research and/or innovation in order to develop new knowledge and procedures and to integrate knowledge from different fields	<b>Manage and transform</b> work or study contexts that are complex, unpredictable and require new strategic approaches; take responsibility for contributing to professional knowledge and practice and/or for reviewing the strategic performance of teams

14

## IQF e.g. S&H-Plan adjustments

Article 6 (c) <b>Project execution stage: duties of co-ordinators</b>		
The co-ordinator(s) for safety and health matters during the project execution stage appointed in accordance with Article 3 (1) shall make, or cause to be made, any <b>adjustment required to the safety and health plan</b> referred to in Article 5 (b) and the file referred to in Article 5 (c) to take account of the progress of the work and any changes which have occurred;		
Knowledge	Skills	Responsibility and Autonomy
<b>IQF Level 5</b>		
<b>Be aware</b> of any changes in legal requirements for SHCC	<b>Develop, implement and monitor</b> the construction <b>safety and health plan</b> (execution stage safety co-ordinator)	<b>Correct deviations</b> from the safety and health plan work activities and methods
<b>+</b> <b>IQF Level 6</b> <b>+</b>		
<b>Understand the range</b> of methods of risk control	<b>Use Information Technology</b> to execute the co-ordination function	Use <b>suitable techniques for monitoring</b> construction safety and health risk control
<b>+</b> <b>IQF Level 7</b> <b>+</b>		
<b>Understand the differences</b> between monitoring systems	<b>Develop change strategies</b> to improve construction co-ordination on a project	<b>Compare ranges</b> of communication techniques and be able to <b>select appropriate techniques</b> for the intended audience

15

## ISHCCO Qualification Framework

- “good” Safety and Health Construction Co-ordination can avoid musculoskeletal disorders (MSDs)
- ISHCCO Qualification Framework (IQF):
  - Quality standard for:
    - Safety and Health Construction Coordination
  - Transfer matrix in between different systems (for education and trainings in OSH)
  - Transferable to other OSH - Professions

16